



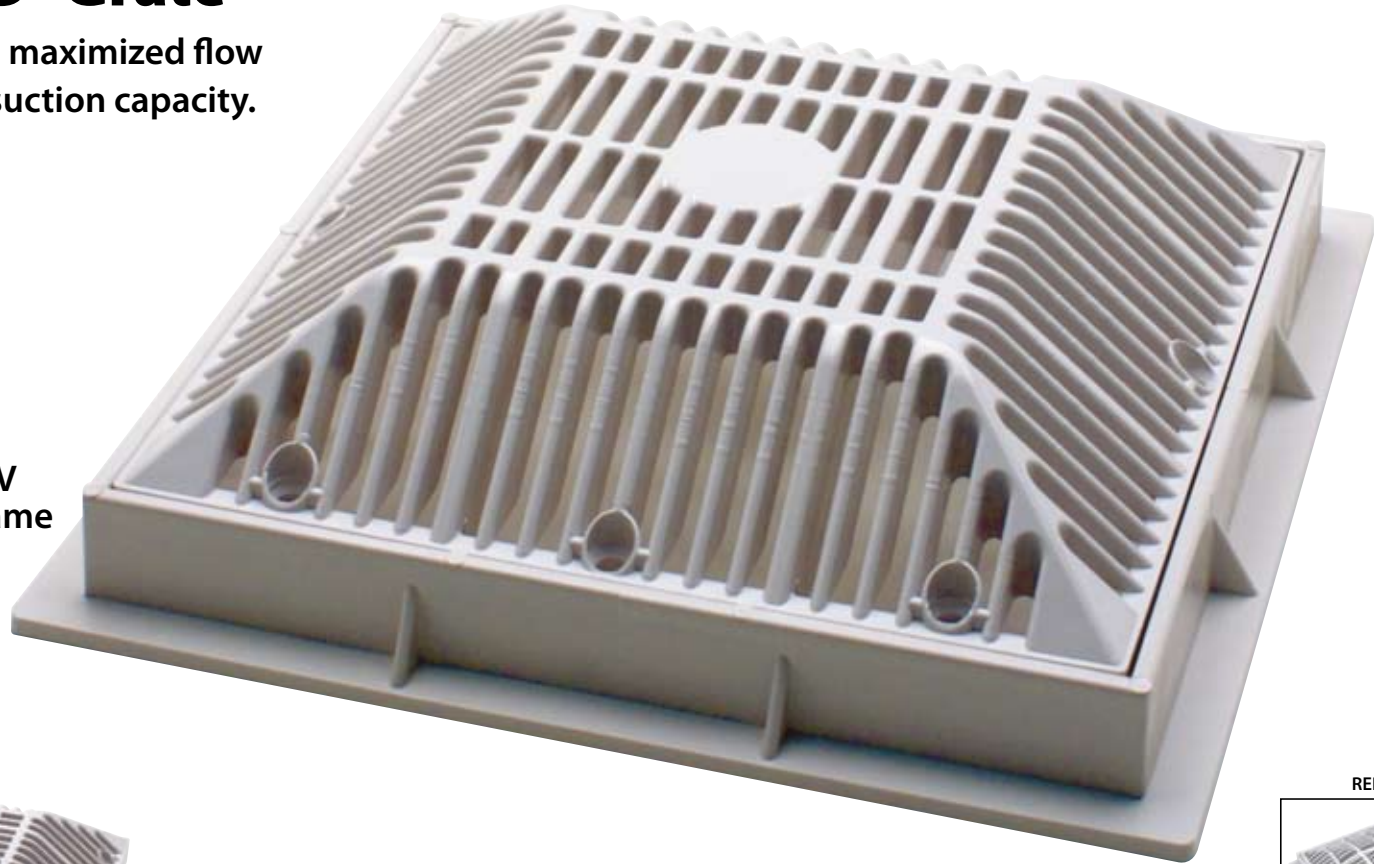
# PRODUCT CHANGE NOTIFICATION

## Our New 9"x 9" Grate

Robust design provides maximized flow for open area and safe suction capacity.

Size:	9"
Open Area:	43.6 in <sup>2</sup>
GPM @ 1.5 fps:	203
Floor Flow Rate:	289 GPM
Wall Flow Rate:	208 GPM

640-479X V  
grate & frame  
assembly



642-479X V  
grate only



REPLACES:



640-470X V



Made in the USA



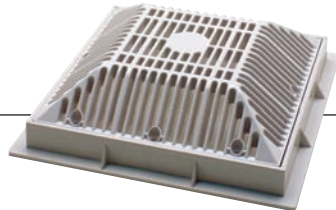
Listed, Certified and tested by UL in strict accordance to the requirements of ASME A112.19.8-2007 and ASME A112.19.8a-2008. Compliant to the latest Consumer Product Safety Commission (CPSC) requirements.



# CERTIFICATION OF COMPLIANCE

## 9" GRATE & FRAME

Contents: 1



Part Number: **640-479X V**

Description: **Grate & Frame**

Size: **9"**

Open Area: **43.6 in<sup>2</sup>**

GPM @ 1.5 fps: **203**

Floor Flow Rate: **289 GPM**

Wall Flow Rate: **208 GPM**



Date of Manufacture:

This product has been tested to ANSI/ASME 112.19.8-2007 (addendum 8a-2008) per §1404 of the Virginia Graham Baker (VGB 2008) Pool and Spa Safety Act. Certified by: Underwriters Laboratories, Inc., 2929 E. Imperial Highway, Suite 100, Brea, CA 92821-6729

This product is certified to comply with §1404 of the Virginia Graham Baker (VGB 2008) Pool and Spa Safety Act. A copy of the test results for the above may be found at [www.waterwayplastics.com](http://www.waterwayplastics.com) or go to [www.ul.com](http://www.ul.com). This product is manufactured by Waterway Plastics, Oxnard, CA 93030



# Waterway™

2200 East Sturgis Road Oxnard, California 93030 • Ph. 805.981.0262 • Fax 805.981.9403  
[waterway@waterwayplastics.com](mailto:waterway@waterwayplastics.com) • [www.waterwayplastics.com](http://www.waterwayplastics.com)



# PRODUCT CHANGE NOTIFICATION

## Our New 18"x18" Grate

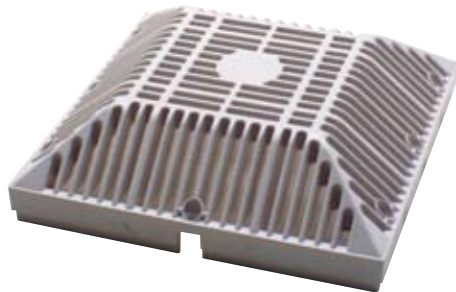
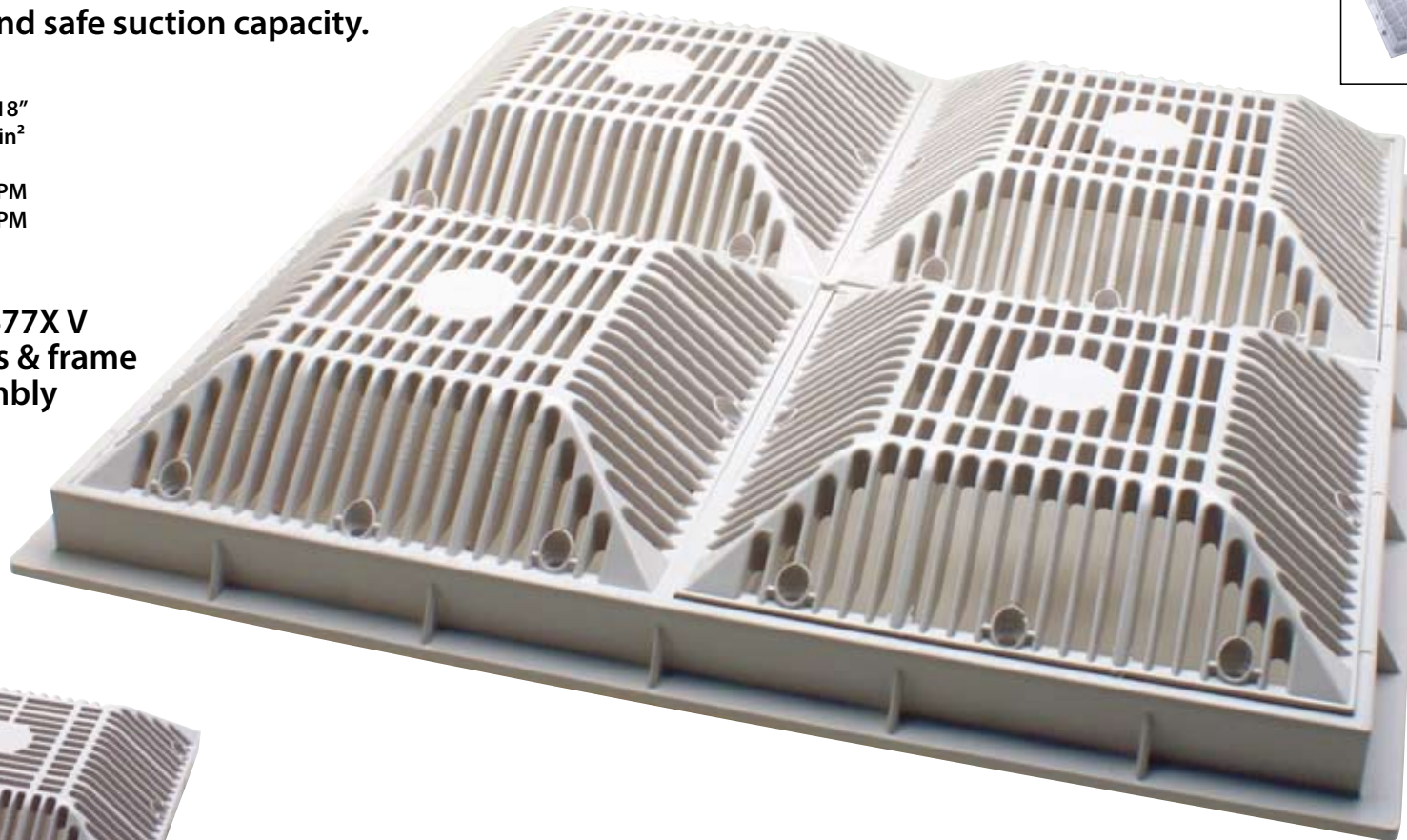
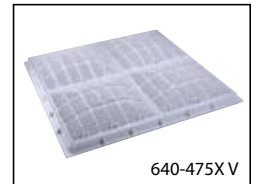
Robust design provides maximized flow for open area and safe suction capacity.

Size: 18" X 18"  
 Open Area: 174.4 in<sup>2</sup>  
 GPM @ 1.5 fps: 812  
 Floor Flow Rate: 788 GPM  
 Wall Flow Rate: 517 GPM

640-477X V  
grates & frame  
assembly

642-479X V  
grate only

REPLACES:



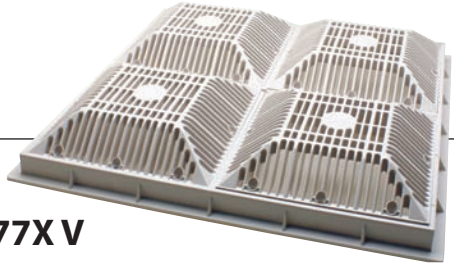
Listed, Certified and tested by UL in strict accordance to the requirements of ASME A112.19.8-2007 and ASME A112.19.8a-2008. Compliant to the latest Consumer Product Safety Commission (CPSC) requirements.



# CERTIFICATION OF COMPLIANCE

## 18" X 18" GRATES & FRAME

Contents: 1



Part Number: **640-477X V**

Description: **Grates & Frame**

Size: **18" X 18"**

Open Area: **174.4 in<sup>2</sup>**

GPM @ 1.5 fps: **812**

Floor Flow Rate: **788 GPM**

Wall Flow Rate: **517 GPM**



Date of Manufacture:

This product has been tested to ANSI/ASME 112.19.8-2007 (addendum 8a-2008) per §1404 of the Virginia Graham Baker (VGB 2008) Pool and Spa Safety Act. Certified by: Underwriters Laboratories, Inc., 2929 E. Imperial Highway, Suite 100, Brea, CA 92821-6729

This product is certified to comply with §1404 of the Virginia Graham Baker (VGB 2008) Pool and Spa Safety Act. A copy of the test results for the above may be found at [www.waterwayplastics.com](http://www.waterwayplastics.com) or go to [www.ul.com](http://www.ul.com). This product is manufactured by Waterway Plastics, Oxnard, CA 93030



# Waterway™

2200 East Sturgis Road Oxnard, California 93030 • Ph. 805.981.0262 • Fax 805.981.9403  
[waterway@waterwayplastics.com](mailto:waterway@waterwayplastics.com) • [www.waterwayplastics.com](http://www.waterwayplastics.com)



# PRODUCT CHANGE NOTIFICATION

## Our New 10" Tru Flo Drain

Robust design provides maximized flow for open area and safe suction capacity.

640-19XX V  
cover & frame  
assembly

Size: 10"  
Open Area: 33.7 in<sup>2</sup>  
GPM @ 1.5 fps: 156  
Floor Flow Rate: 200 GPM  
Wall Flow Rate: 136 GPM



642-241X V  
cover only



REPLACES:



640-311X V



Listed, Certified and tested by UL in strict accordance to the requirements of ASME A112.19.8-2007 and ASME A112.19.8a-2008. Compliant to the latest Consumer Product Safety Commission (CPSC) requirements.



# CERTIFICATION OF COMPLIANCE

## 10" TRU FLO DRAIN COVER

Contents: 1



Part Number: **640-19XX V**

Description: **Round Tru Flo Drain & Frame**

Size: **10"**

Open Area: **33.7 in<sup>2</sup>**

GPM @ 1.5 fps: **156**

Floor Flow Rate: **200 GPM**

Wall Flow Rate: **136 GPM**



Date of Manufacture:

This product has been tested to ANSI/ASME 112.19.8-2007 (addendum 8a-2008) per §1404 of the Virginia Graham Baker (VGB 2008) Pool and Spa Safety Act. Certified by: Underwriters Laboratories, Inc., 2929 E. Imperial Highway, Suite 100, Brea, CA 92821-6729

This product is certified to comply with §1404 of the Virginia Graham Baker (VGB 2008) Pool and Spa Safety Act. A copy of the test results for the above may be found at [www.waterwayplastics.com](http://www.waterwayplastics.com) or go to [www.ul.com](http://www.ul.com). This product is manufactured by Waterway Plastics, Oxnard, CA 93030



# Waterway™

2200 East Sturgis Road Oxnard, California 93030 • Ph. 805.981.0262 • Fax 805.981.9403  
[waterway@waterwayplastics.com](mailto:waterway@waterwayplastics.com) • [www.waterwayplastics.com](http://www.waterwayplastics.com)